



# Compendious Multitudes

Examining Kuala Lumpur at the Microscopic Level

| Spatial Planning Intelligence

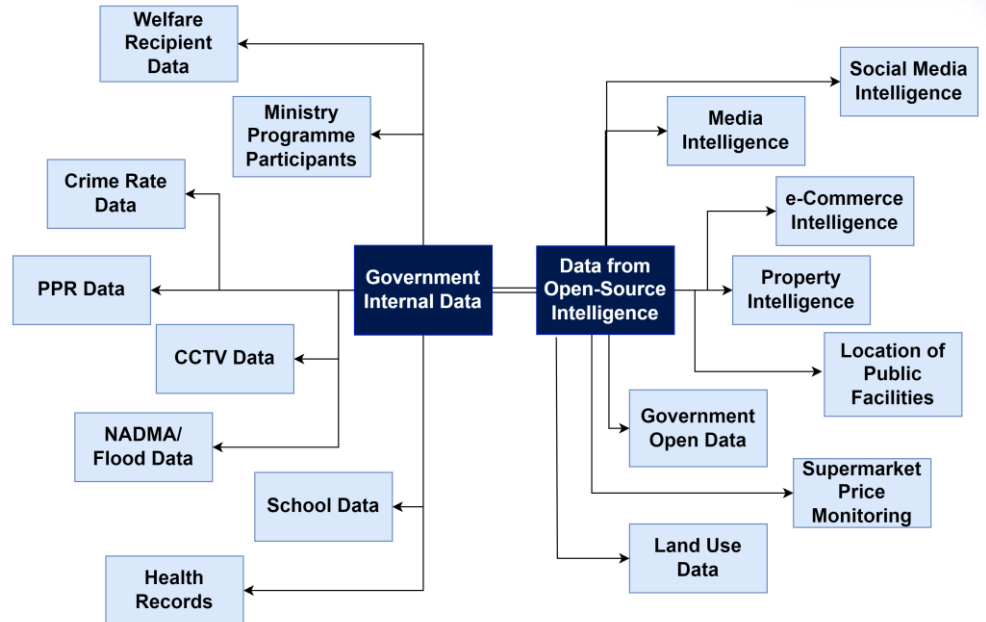
February 2023



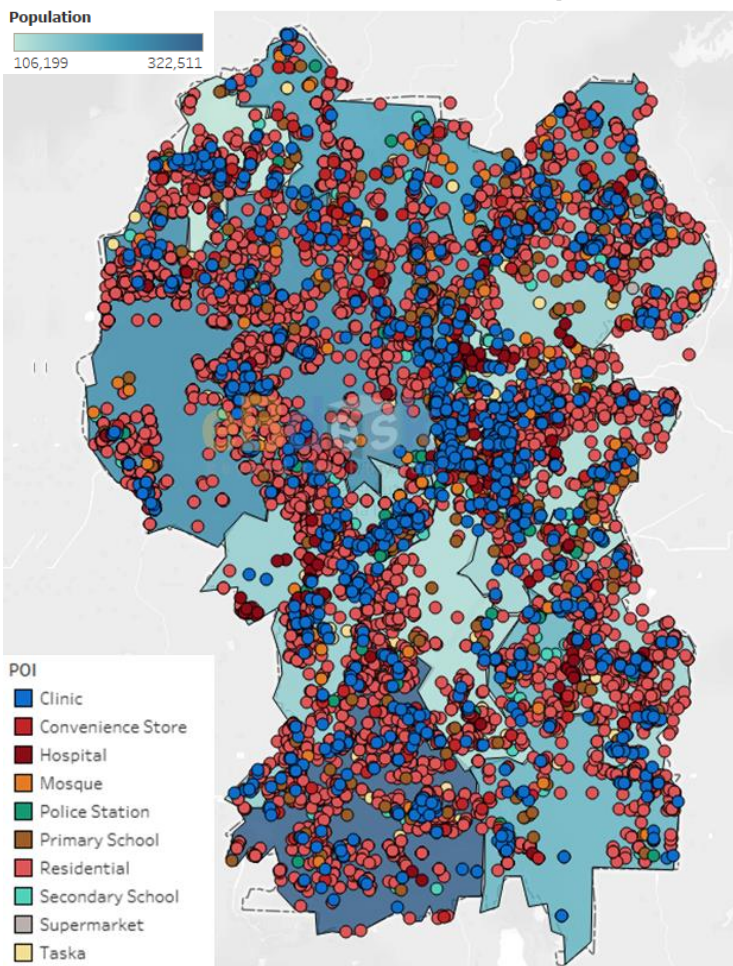
Disclaimer: This data intelligence overview is based on known open-source data. For any inquiries, please reach out to [ebdesk-my@ebdesk.com](mailto:ebdesk-my@ebdesk.com)

# Symbiosis Push

The abundance of data has allowed for integration between internal and open-source intelligence which can be used to develop better planning for the urban city.

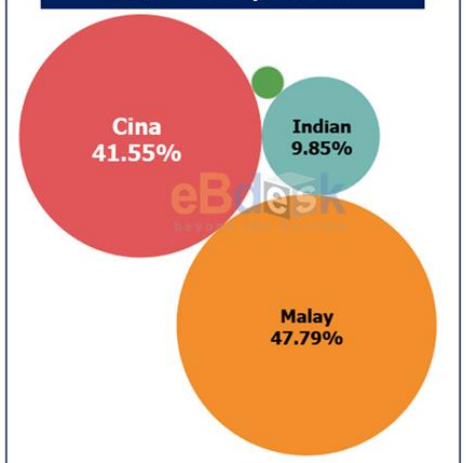


## Overview of Kuala Lumpur



Reflected in the visual, data integration has allowed for comprehensive insights into Kuala Lumpur, such as determining the adequacy of public facilities within the residential compound aside from indicating the densest population together with the ethnic composition.

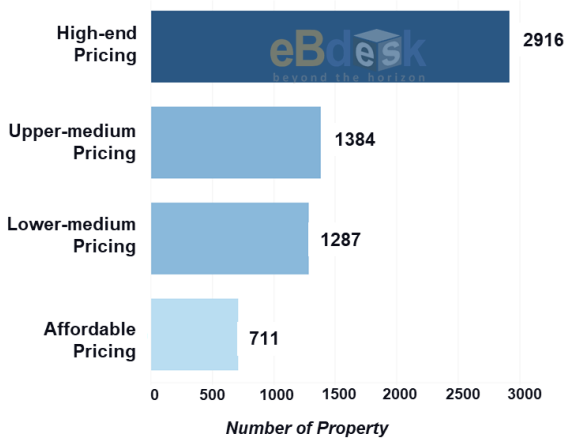
## Ethnic Composition



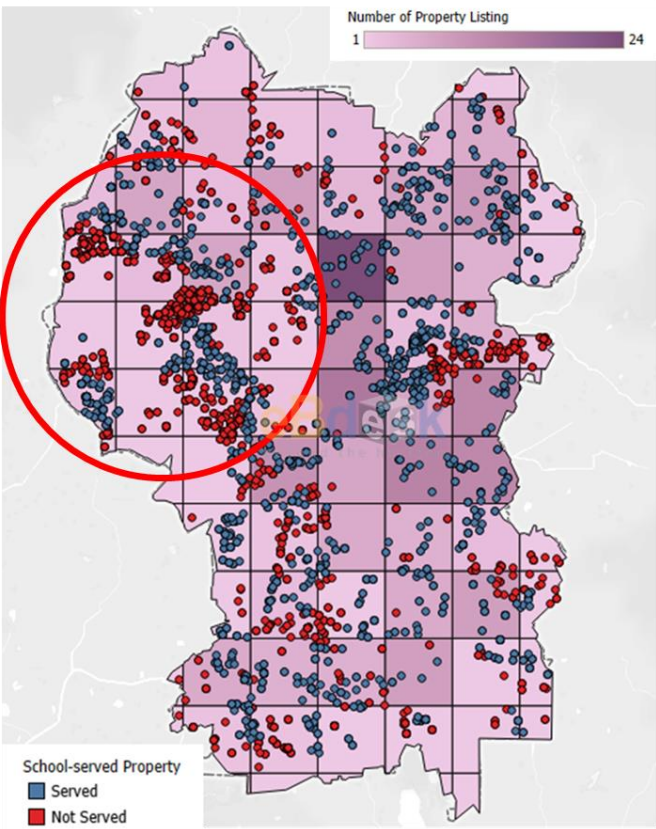
# Gauging Livelihood

A breakdown of property data has indicated that high-end property is the majority listing although when it is paired with school locations it shows that Segambut has the most unserved schools.

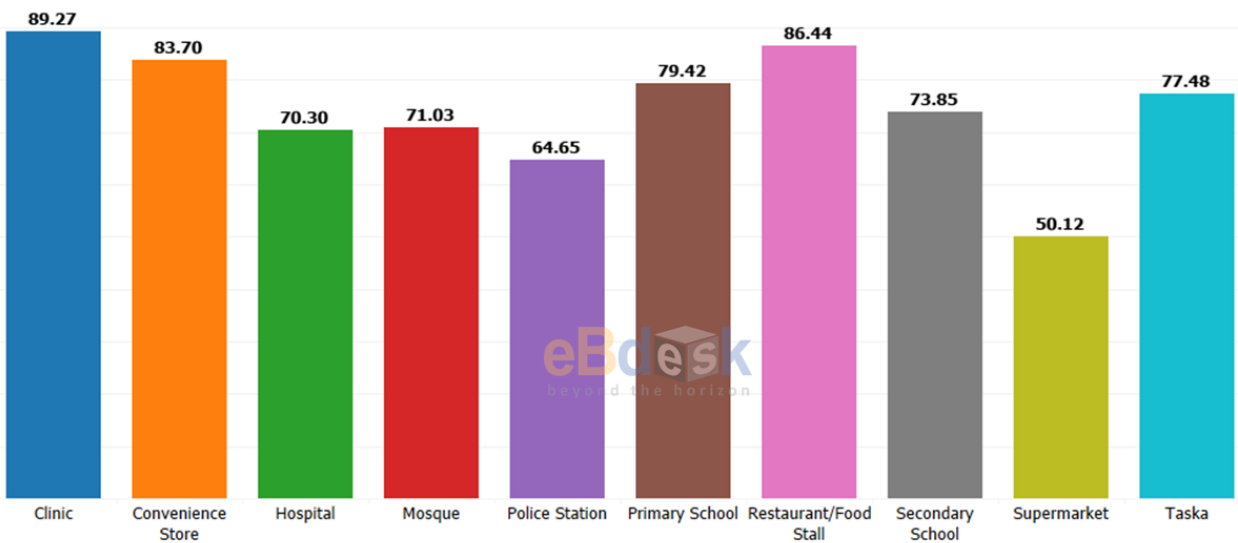
Price Range Distribution of Residential Property



Residential Property Served by School Distribution Map



Standard of Living Index by POI

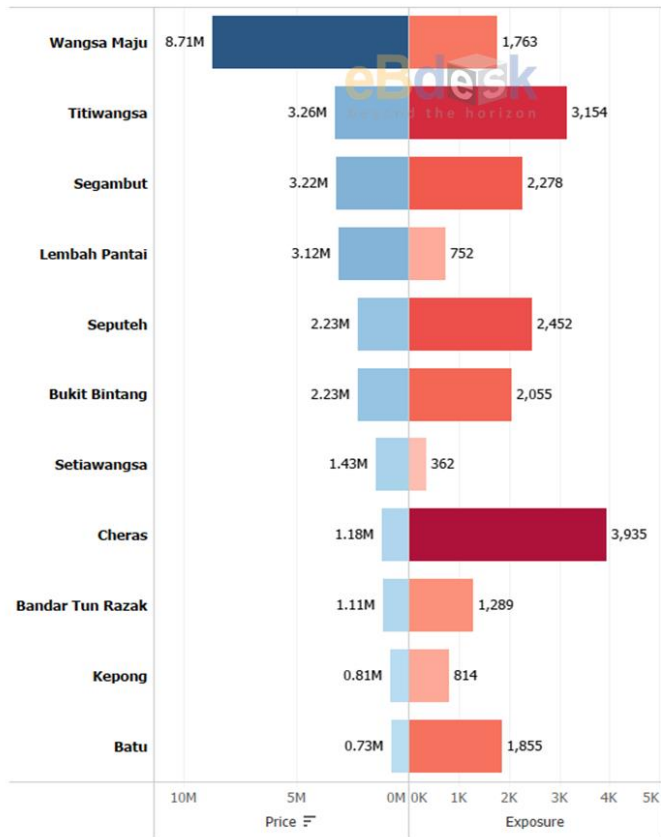


An additional insight of the Standard of Living Index, which calculates the distance between residential and facilities can also be conducted with a result showing that supermarket scores the lowest among all.



# Guarding Community

Average Property Price vs Count of Crime Media Exposure by Sub-District



Distribution of Drug-issued and Drug-free Schools in Kuala Lumpur

## Within 500m of Police Station

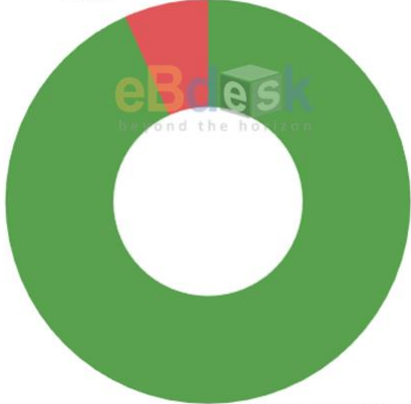
Drug Issued School  
4.55%



Drug Free School  
95.45%

## Within 1km of Police Station

Drug Issued School  
6.71%



Drug Free School  
93.29%

With protection as the uttermost importance, it is visible that fruitful insights can be generated such as the correlation between property price and crime exposures whereby Wangsa Maju has the highest average price.

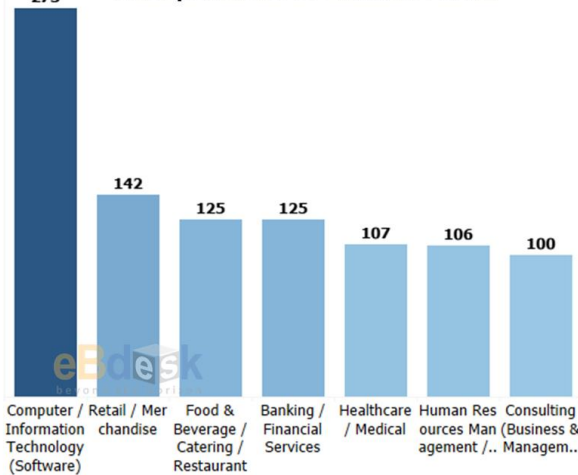
Crime Media Exposure by District



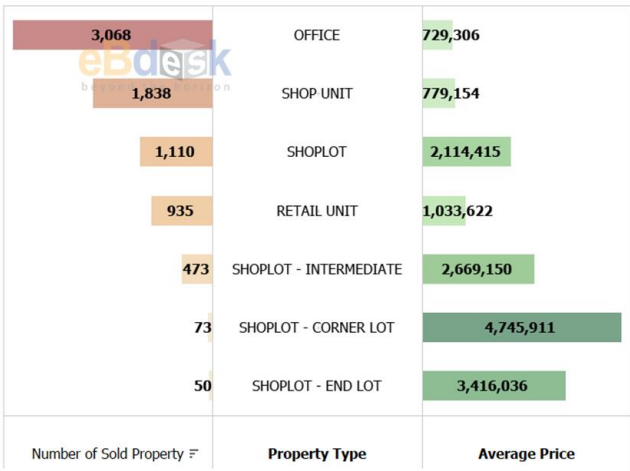
In addition, the analysis has also shown that the proximity of problematic schools and the police stations can be measured accordingly and it is safe to say the location is adequate enough to provide protection for the community.

# Business Dynamics

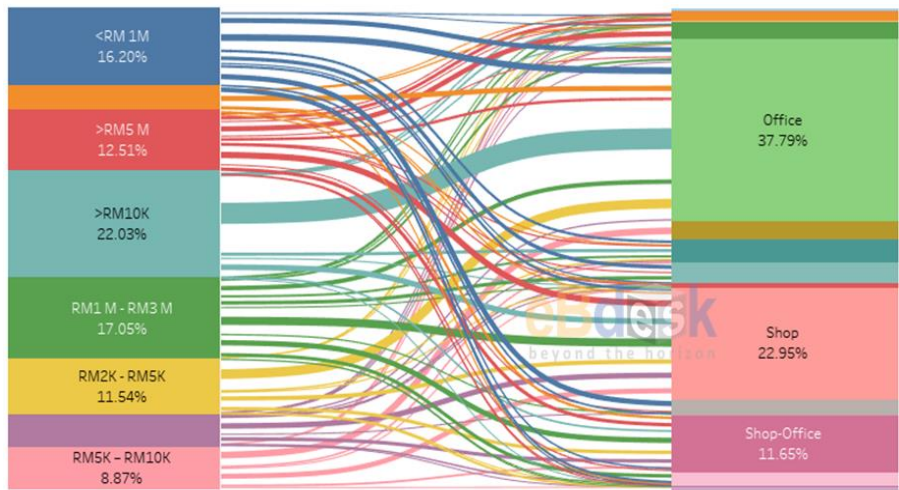
Top 7 Industry Nearby Public Transportation in Lembah Pantai



Number of Commercial Property Listings & Total Transaction



Correlation of Commercial Property Listings, Type and Price Range



As Kuala Lumpur is the centre of the nation's economy, it is reflected in the data whereby a significant number of commercial properties are being transacted, especially office buildings.

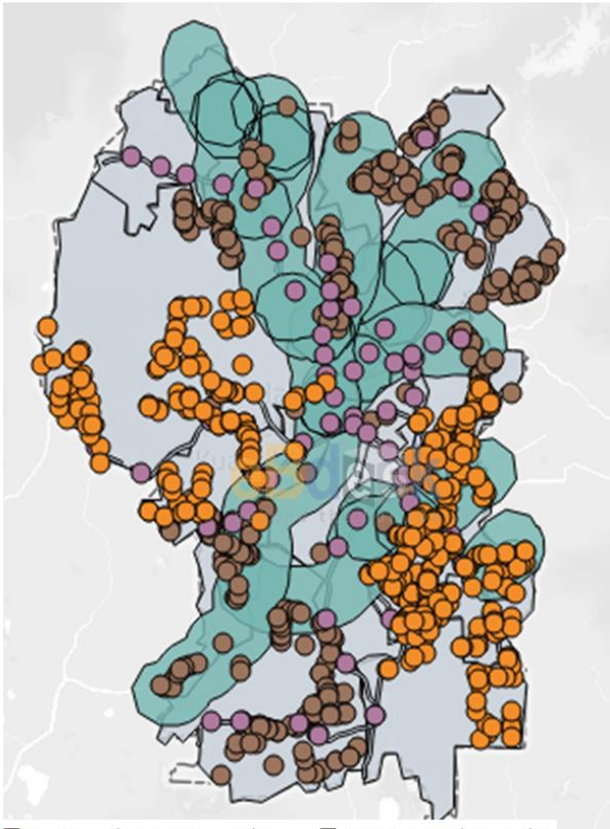
Aside from that, as the data has been broken further, it is visible that startup companies have dominated the job listings possibly due to the business environment in the nation.

Number of Companies by Industry & Size



# Sustainable Measure

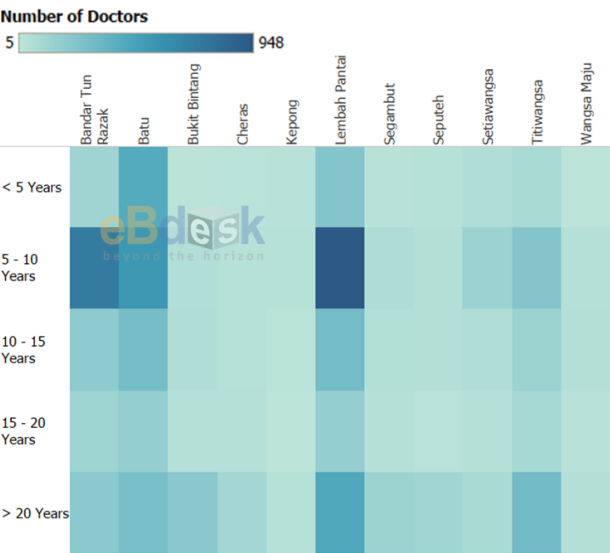
## Public Transportation to Flood-prone Areas in Kuala Lumpur



Bus Feeder SBK KL Only    T Bus Rapid KL Only  
MRT & LRT Station KL    River

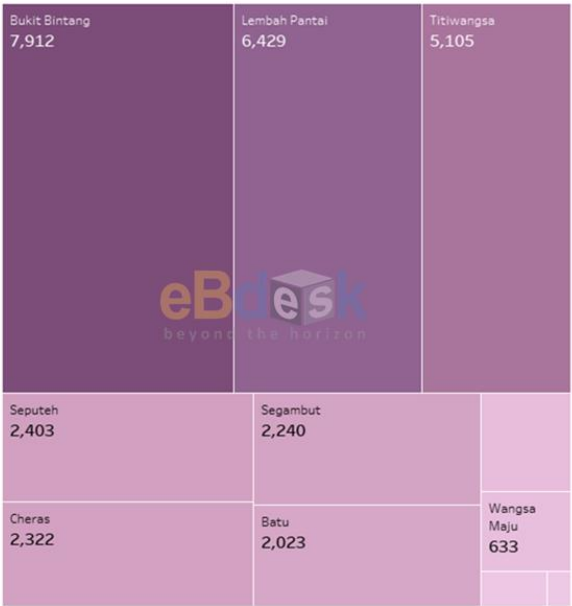
In line with sustainable development, it appears that a significant number of public transportation is close to flood-prone area.

## Distribution of Doctors by Districts and Experiences

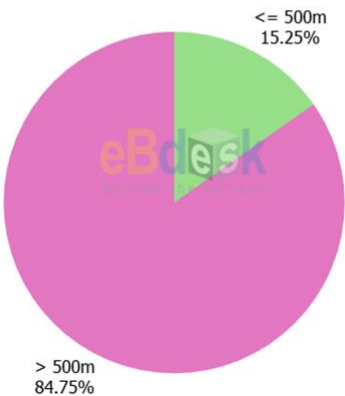


As doctors are highly needed during emergency response, it shows that 5-10 years of experience is the top category.

## Commercial Property Count in Flood-prone Area



## Distribution of Tourism Attractions Within 500m of Public Transportation



It is also shown that most of the tourist attractions are located nearby public transportation.

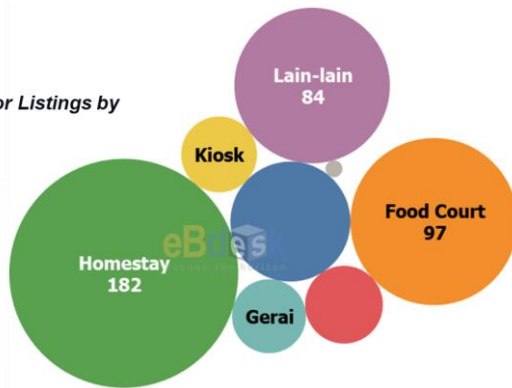


# Alternative Means

Informal Sector Listings by Type

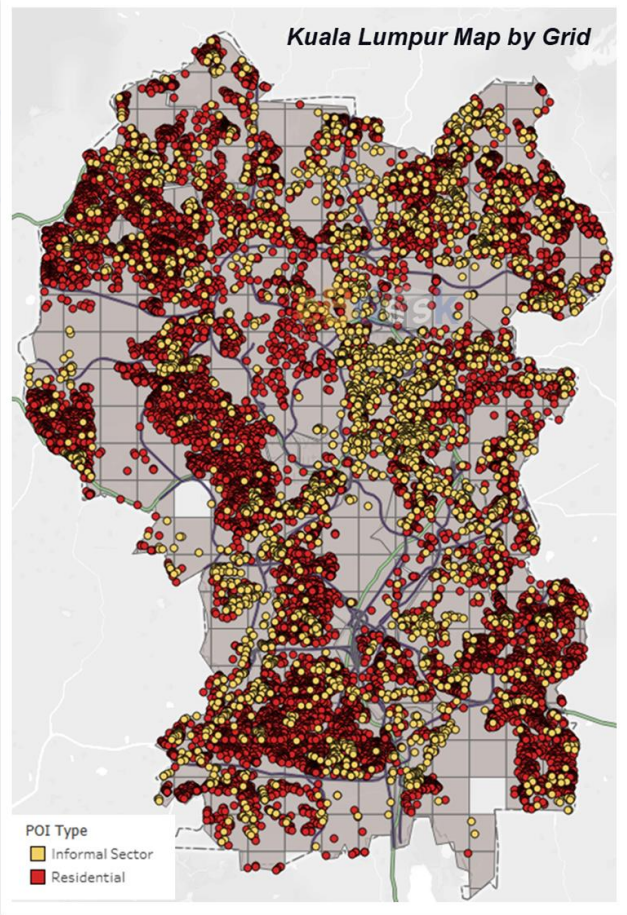
Informal Sector Type

- Bazaar/Pasar
- Food Court
- Food Truck
- Geral
- Homestay
- Kiosk
- Lain-lain
- Tapak Penjaja

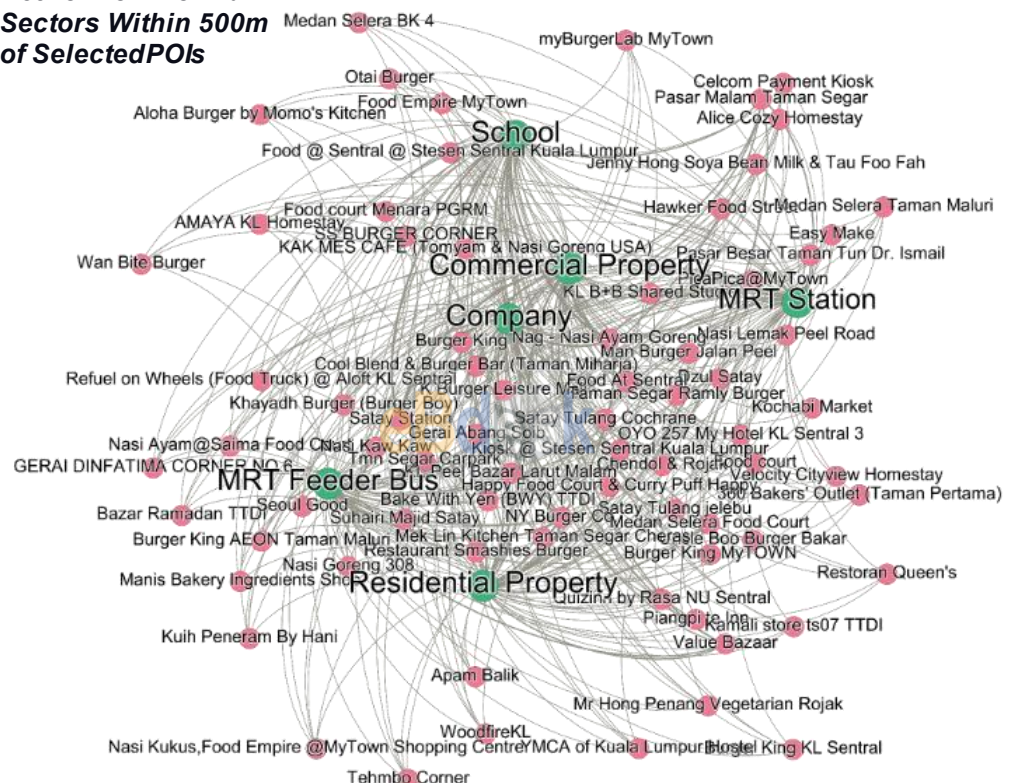


With a growing number of the informal sector, it is illustrated in the map whereby the location of the informal sector is highly within the proximity of residential areas, with homestay being the most prominent due to the increasing demand for a staycation.

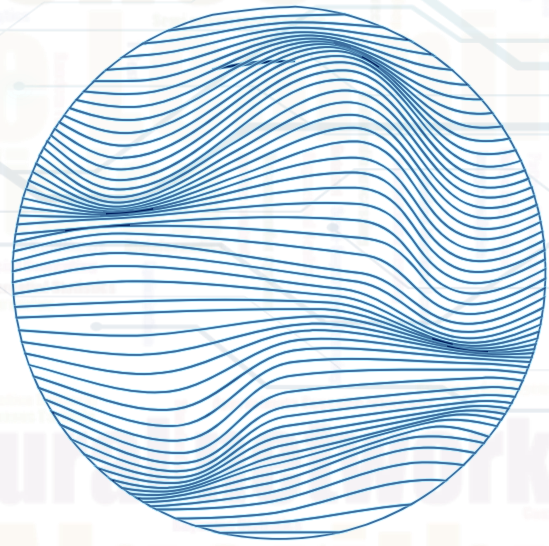
Kuala Lumpur Map by Grid



Network of Informal Sectors Within 500m of Selected POIs



Thus, by leveraging Big Data Analytics, it has added another milestone in town planning, especially in providing cohesive solutions for urban dwellers.



**eBdesk**  
beyond the horizon  
[www.ebdesk.com](http://www.ebdesk.com)

We are a research-based entity that focuses on data storytelling by leveraging Big Data Analytics and Artificial Intelligence to generate insights from diversified contexts such as price intelligence, perception intelligence, economic intelligence, and character-construct intelligence.



FACEBOOK  
[@malaysiaindicator](https://www.facebook.com/malaysiaindicator)



YOUTUBE  
[@malaysiaindicator](https://www.youtube.com/malaysiaindicator)